

<b>Tech Issue</b>	<b>TXP-011</b>	<b>Created</b>	<b>Jan. 20, 2009</b>
		<b>Modified</b>	<b>Oct. 18, 2010</b>
<b>Category</b>	<b>Configuration</b>		
<b>Product</b>	<b>All products</b>		
<b>Title</b>	<b>How to use the Alarm In and Control out function of the Video Server?</b>		

## How to use the Alarm In and Control out function of the Video Server?

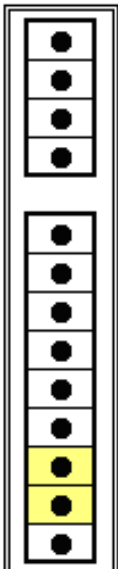
To use the Alarm In and Control out function, you have to use wire to connect the alarm/control devices to the Video Server first.

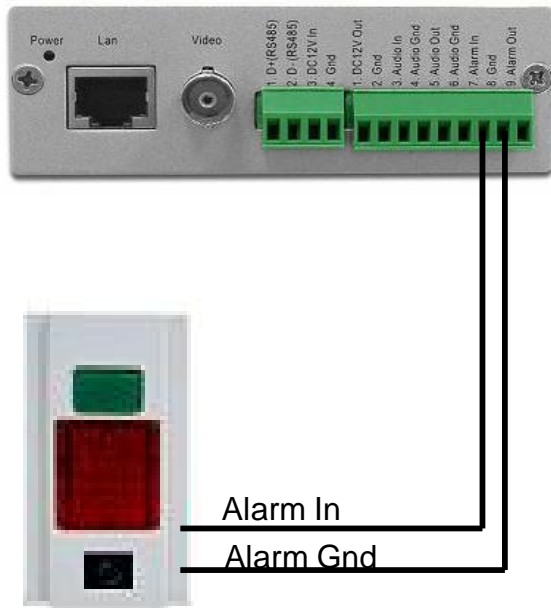
### Alarm In:

The Alarm In device such as Panic Button/Limited Switch/PIR Sensor...etc, has to connect to the Pin 11 and Pin 12 of the Video Server

**Back Panel Connector**


Pin No.	Print	Definition
1	1. D+ (RS485)	D+ ( RS485 )
2	2. D- (RS485)	D- ( RS485 )
3	3. DC 12V In	DC 12V In ( connect when if w/o PoE )
4	4. Gnd	Gnd ( only for 3. DC 12V In )
5	1. DC 12V Out	DC 12V Out ( only for camera )
6	2. Gnd	Gnd ( only for camera )
7	3. Audio In	Audio In
8	4. Audio Gnd	Audio Gnd ( only for 3. Audio In )
9	5. Audio Out	Audio Out
10	6. Aundio Gnd	Aundio Gnd ( only for 5. Audio Out )
11	7. Alarm In	Alarm In
12	8. Gnd	Gnd
13	9. Alarm Out	Alarm Out





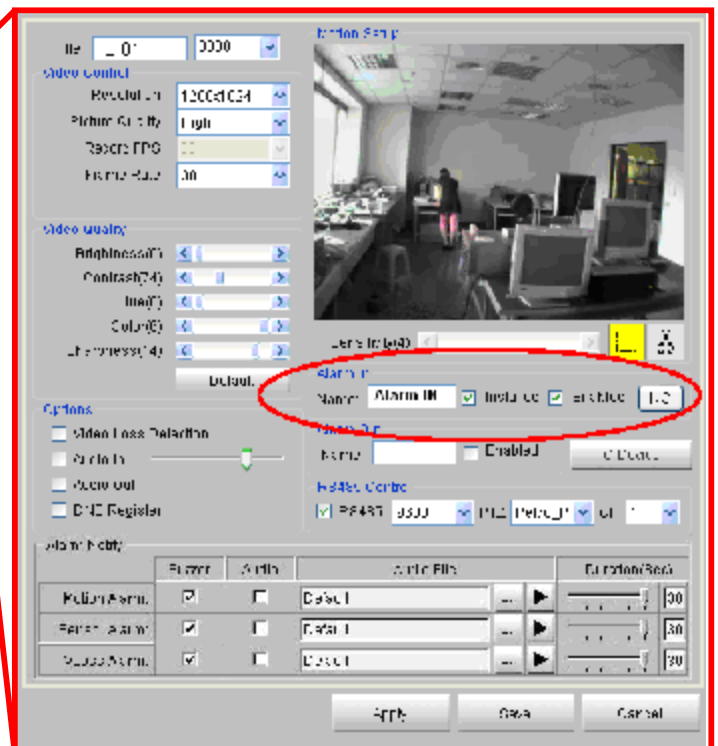
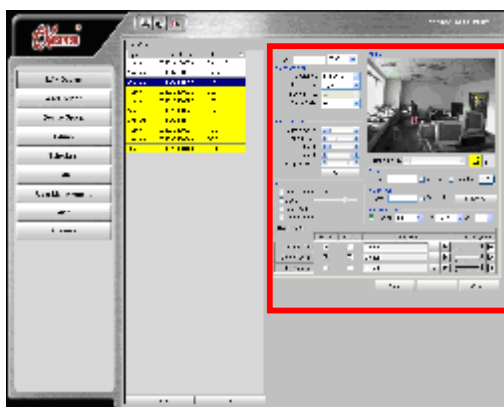
### Panic Switch


On the CMS settings, you have to enable the Alarm In function on the Camera Setting of this Video Server..

1. Press the  button on the Main Control Panel of the CMS.





2. Check Alarm In  Name:  Installer  Enabled  Installed and Enabled box, and define the type of the Alarm (NO: Normal Open; NC: Normal Close).



3. Click Save button after you done the setting and click  back to CMS Live-View mode.



When the Alarm In function is enabled, the  icon will turn red. When the Alarm In device (e.g. Panic Switch) is triggered, an  icon will appear on the upper-right hand corner on the live screen with alarm sound,

### Control Out:

The Control Out also called Alarm Out. Devices like Light / Gate Lock / Electric Lock have to connect to the Pin 13 and Pin 12 of the Video Server.

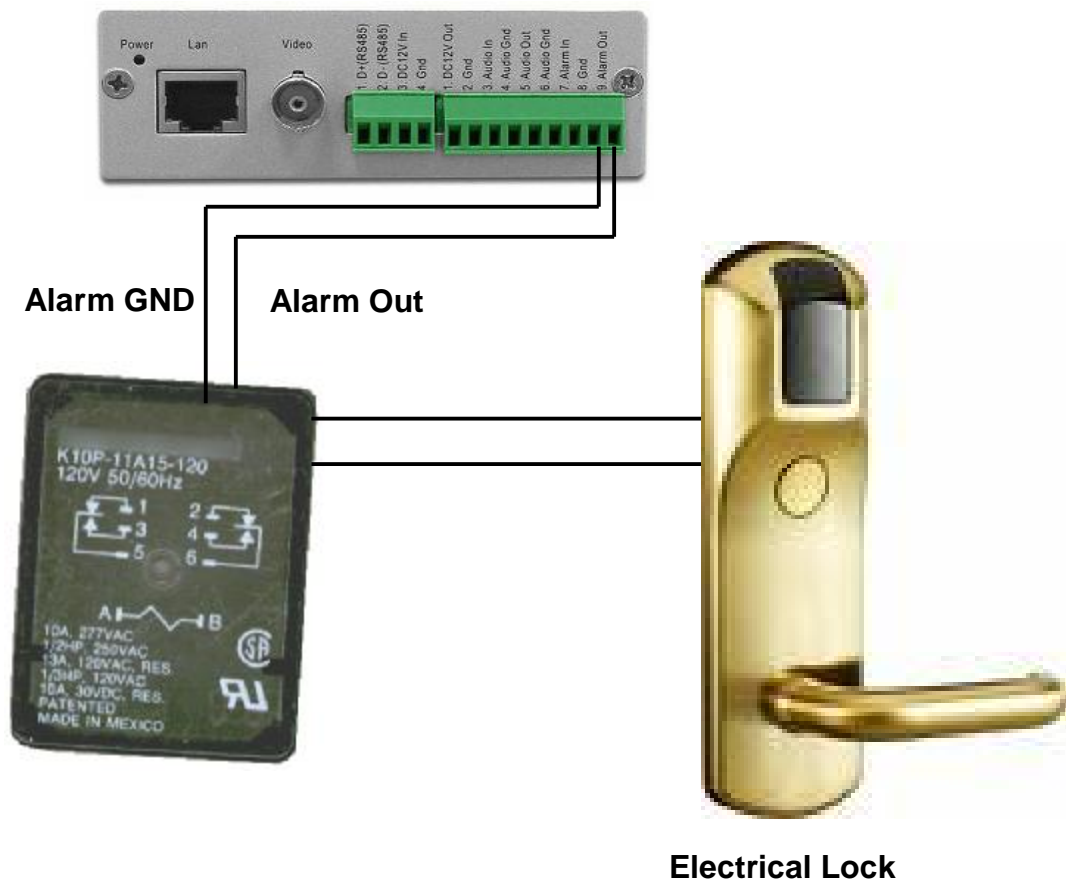
Back Panel Connector

Pin No.	Print	Definition
1	1. D+ (RS485)	D+ ( RS485 )
2	2. D- (RS485)	D- ( RS485 )
3	3. DC12V In	DC12V In ( connect when if w/o PoE )
4	4. Gnd	Gnd ( only for 3. DC12V In )
5	5. 1. DC12V Out	DC12V Out ( only for camera )
6	6. 2. Gnd	Gnd ( only for camera )
7	7. 3. Audio In	Audio In
8	8. 4. Audio Gnd	Audio Gnd ( only for 3. Audio In )
9	9. 5. Audio Out	Audio Out
10	10. 6. Aundio Gnd	Aundio Gnd ( only for 5. Audio Out )
11	11. 7. Alarm In	Alarm In
12	12. 8. Gnd	Gnd
13	13. 9. Alarm Out	Alarm Out

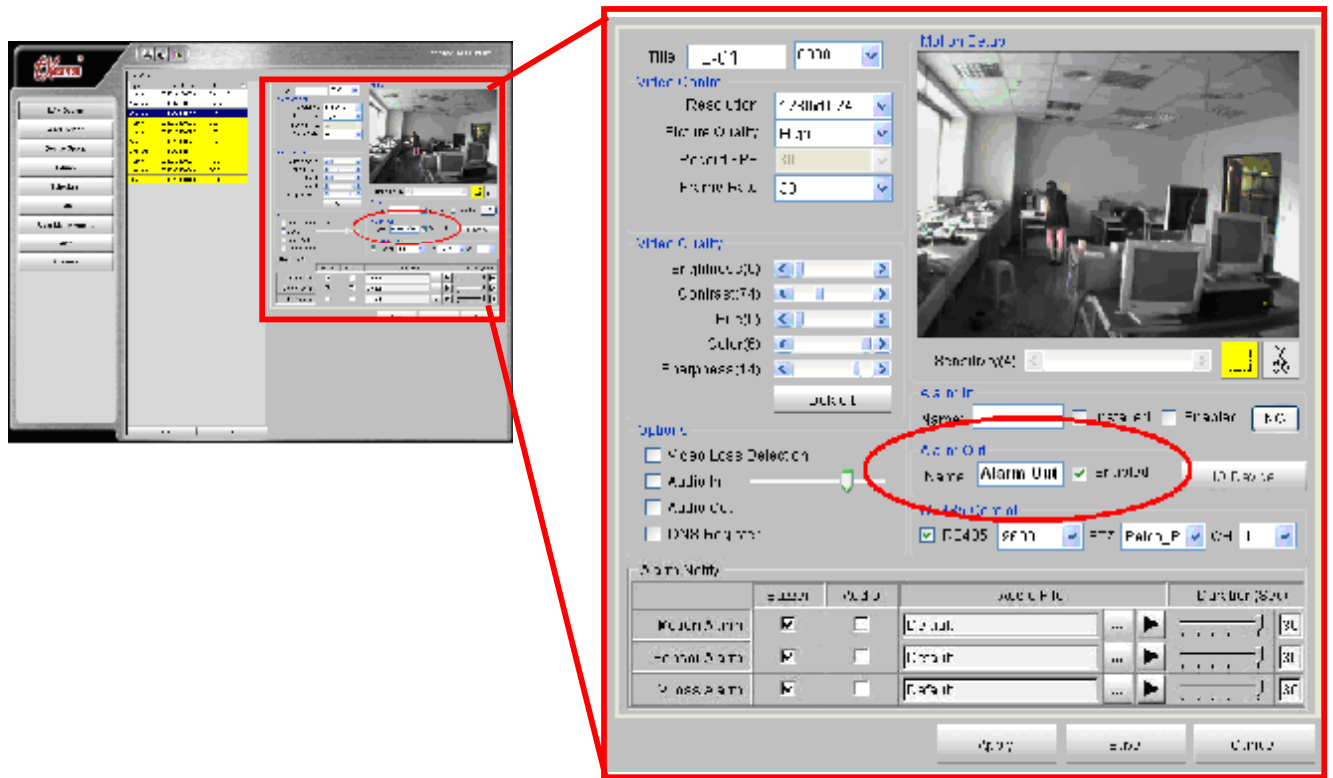
The Alarm Out PIN only provide the 3.5V power to devices, so user have to use a appropriate relay to turn the devices on / off.



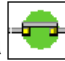
### Relay

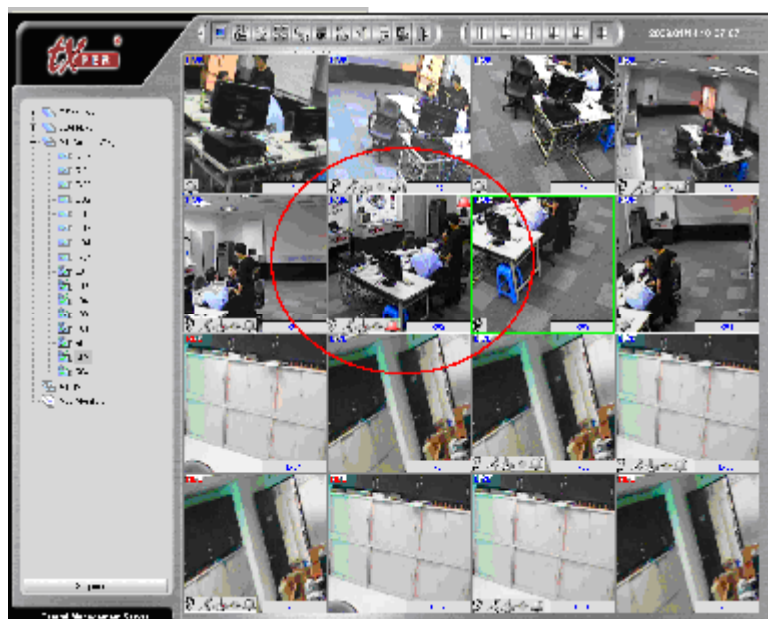


On the CMS you need to enable the Alarm Out of the Video Server settings,



1. Check the Enabled box under Alarm Out.

2. When return to CMS Live-View Mode, a  icon will appear on the Camera screen.



3. Click the icon to switch on/off the output devices such as Locks / Light / Gate.