



# Central Monitoring Software

## Software Package Incl.

Software CD x 1  
 USB2.0 License Key x 1  
 Manual



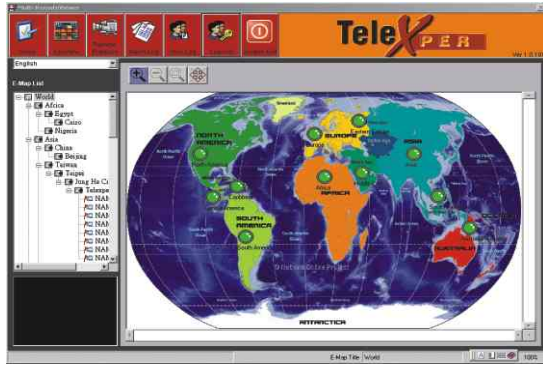
## Specification

Model No.	<b>MV168-W</b>
Compatible DVR	WinXP Embedded DVR
No. of Monitoring DVR	128
No. of Display Camera on Screen	256
E-map	7. Layers
Alarm E-mail Notification	Yes
Alarm Log (Picture)	Yes
Pre/ post Alarm picture	Yes
Time Synchronization	Yes
Multi-user, Multi-authority	Yes
Hidden Camera & DVR	Yes

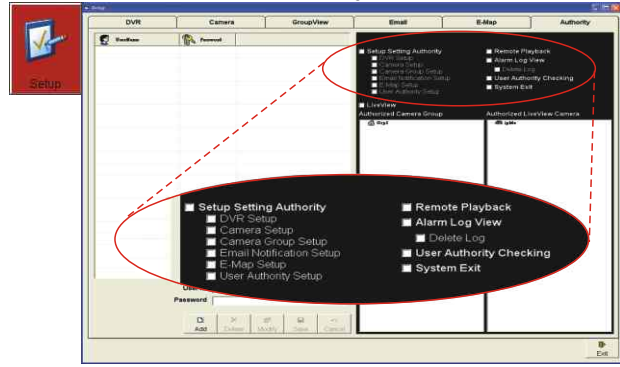
## Recommended minimum PC Requirement

- Operation System: Win2000, WinXP
- CPU: 2.88GHz (min.)
- USB2.0 port x 1 (min)
- VGA Display: 1,280 x 1,024 pixels
- Free Hard Disk Space: 160GB (min.)
- 5M (downstream) Broadband Bandwidth preferred

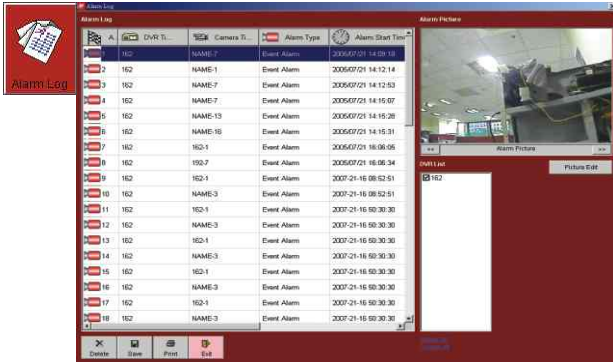
### Main Menu



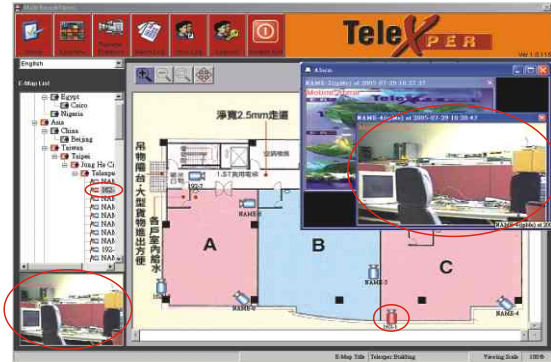
### Multi-user, Multi-authority



### Alarm Log with Picture



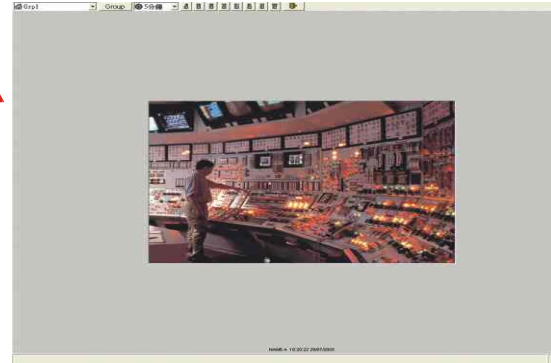
### Alarm Notification



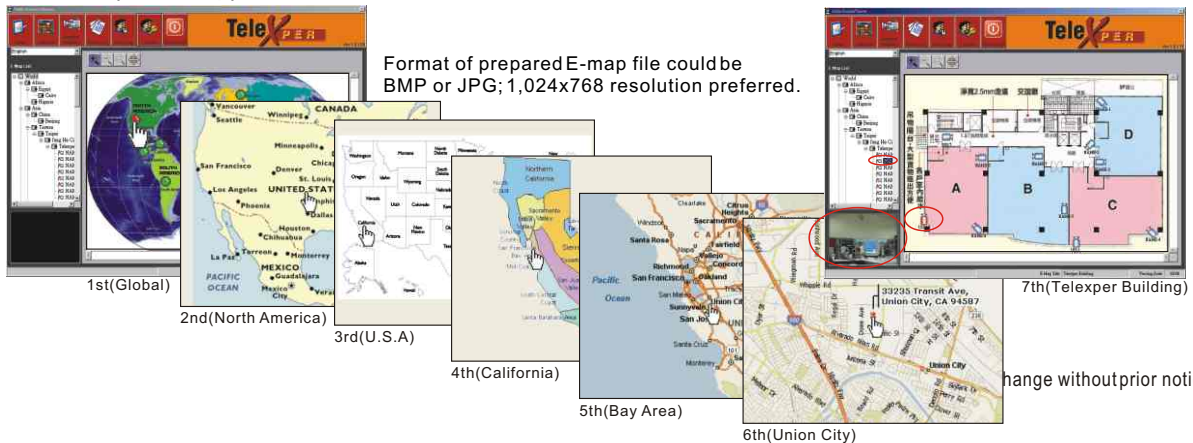
### Live View (GroupView 256-Camera)



### Live View (Full-Screen)



### Live View (Via E-Map)



**Telexper International Inc.**  
 3F.-3, No.2, Jian 8th Rd., Zhonghe Dist.,  
 New Taipei City 235, Taiwan (R.O.C.)  
 Tel : +886-2-6620 5898  
 Fax: +886-2-6620 6909  
 E-mail: sales-tw@telexper.com



**Headquarters**  
 333235 Transit Avenue,  
 Union City, CA 94587 U.S.A.  
 Tel : +1.510.477 9150  
 Fax: +1.510.477 9644  
 Email: sales-us@telexper.com

[www.telexper.com](http://www.telexper.com)  
 CE FC RoHS Onvif  
**OEM/ODM**  
**Project Support**

MultiViewer-3-2