



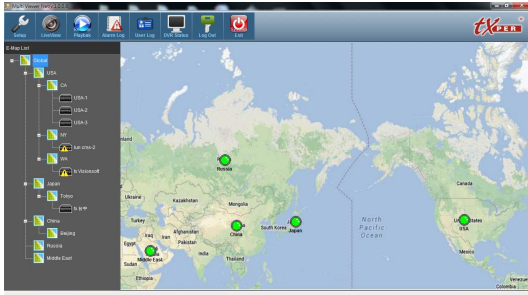
## Multi Viewer Specification

<b>Model No.</b>	MV168-IP
Compatible NVR or Software	nCMS, nCS, nHybrid
Device Management	Add & delete device, remotely monitor and playback, Full-functional remote PTZ control
E-map	Multiple layers
Two-way Audio Communication	Support
Multi-level User Authority	Support
User Log / Alarm Log	Support
Status Monitoring	Connection Lost Detection, NVR Recording Status
Remote I/O Control	Support
<b>Live View</b>	
Quantity of Monitoring NVR	128
Video Display Split	256 ch
Megapixel Resolution	Support Telexper all series network cameras in all resolutions
PTZ Control	Directions, Pan, Tilt, Zoom, Focus, Iris, Preset
Snapshot	Support
Live View of Multiple NVRs into single layout	Support
<b>Playback</b>	
Search Video Clip by Time	Support
Video Search from local NVR and Storage System	Support
Alarm Signal Monitoring	Motion Detection

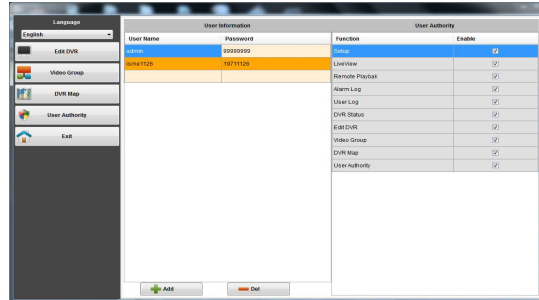
# Hardware Specification

Operating System	Windows 10 64bit OS
CPU	Intel Core i5 CPU, or higher
Ram	8GB Memory or more
HDD	Min. 300MB space size for software application installation
Display	Best recommended resolution at 1920 x 1080
Downstream Bandwidth	5M, or higher

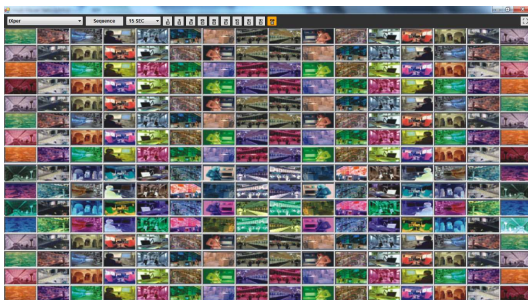
## Main Menu



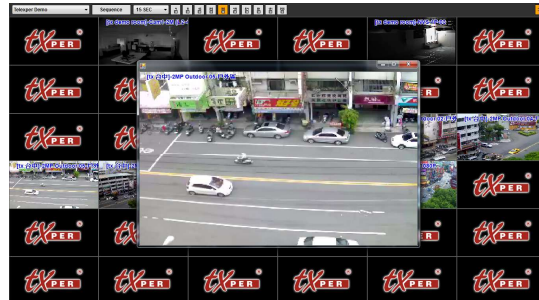
## Multiple User, Multiple Authority



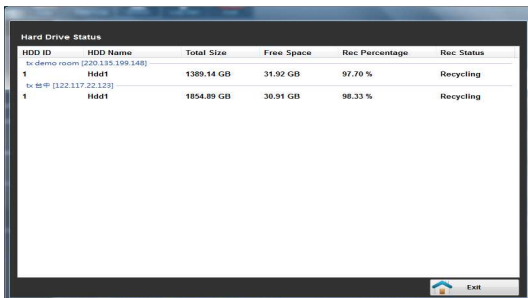
## Live View (Group View 256-Camera)



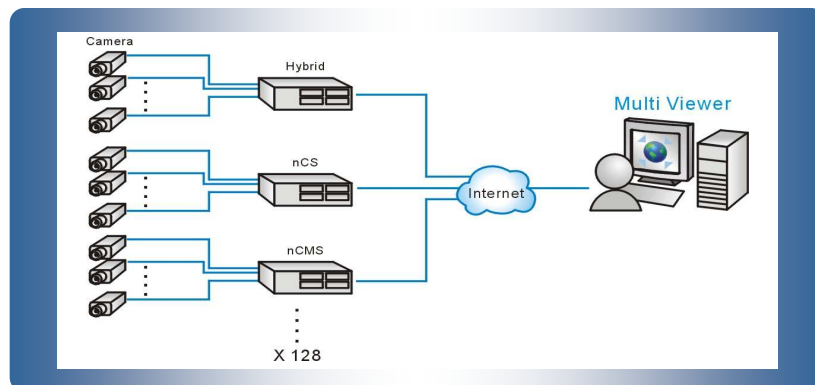
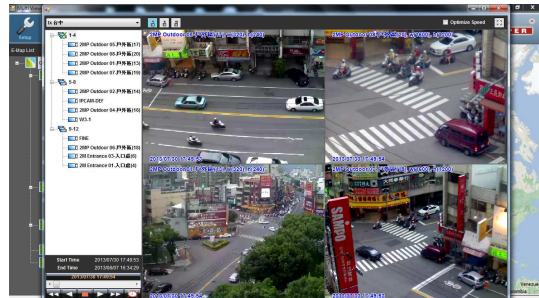
## Live View (Full-Screen)



## NVR Status



## Playback and AVI Export



(Specifications subject to change without prior notice)

## Telexper International Inc.

33235 Transit Avenue, Union City, CA 94587 USA / Phone: 1-510-477-9150 / Fax: 1-510-477-9634

3F.-3, No.2, Jian 8th Rd., Zhonghe Dist., New Taipei City 235, Taiwan (R.O.C.) / Phone: +886-2-6620-5898 / Fax: +886-2-6620-6909 / <http://www.telexper.com> / E-mail: [sales-tw@telexper.com](mailto:sales-tw@telexper.com)