



tx **PER**®

Quick Installation Guide

Commander Station

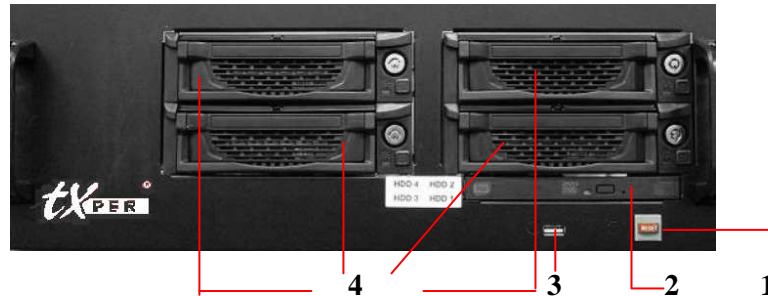
www.telexper.com

1

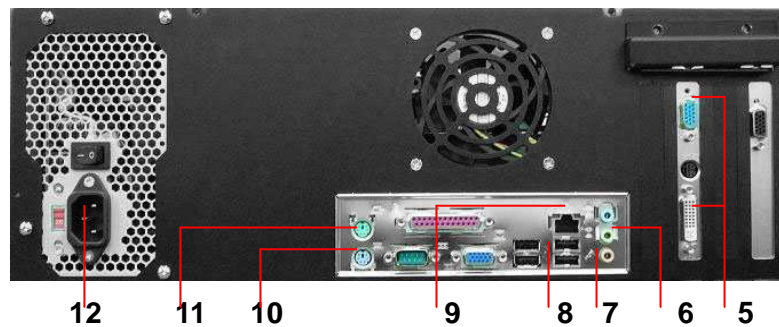
nCS Quick Installation Guide

● Commander Station:

- Product Front View



- Product Rear View



Item	Component	Description
1	Power button	Press to turn the nCS on.
2	Recordable DVD Drive	Use this drive to install programs, store files onto recordable DVDs.
3	USB port	Plug USB devices.
4	HDD Caddy * 4	For HDD installation.
5	Video Out	Video output connector for Monitors.
6	Speaker Out	Plug an external speaker into this jack to listen voice.
7	Mic In	Plug an external microphone into this jack to transmit voice.
8	USB ports * 4	Plug USB devices.
9	Ethernet Jack	Plug 10/100/1000 Ethernet network cable into the jack.
10	Keyboard	Plug the keyboard.
11	Mouse	Plug the Mouse.
12	Power In jack	Plug the power cord into the port.

Note: For dual monitor function (**Live view + E-Map**), please have 2 monitors connected to video output connectors on the back of nCS before starting the system. °

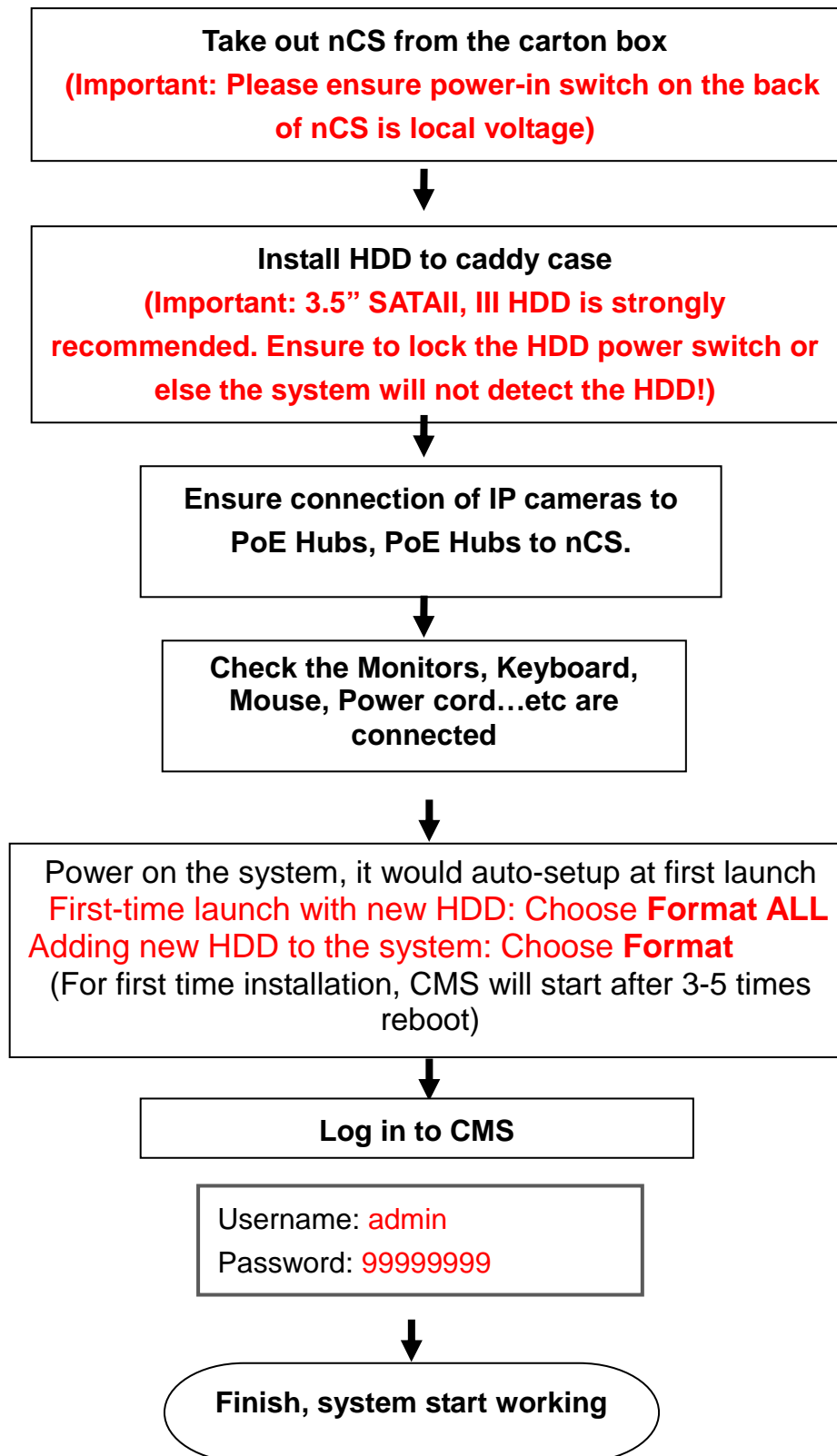
2

● Installation Diagram



3

● System Setup Flow Chart



4

CMS Setup

● Set up Recording Schedule


Time Zone: (GMT+08:00) Taipei

Devices list: Local View, 1.3M, Camera-01, Faraday VGA, VGA

Pre-Alarm: OFF | Alarm: 30(sec) | Keep Recording Until End of Alarm.

Speed: 30 | Full Speed Recording When Alarm Occurred

Drive	Total Space	Recorded Space	Free Space	Max.
<input type="checkbox"/> C:	40.0GB	0.00GB	23GB	Full
<input type="checkbox"/> D:	180.0GB	0.00GB	136GB	Full
<input type="checkbox"/> E:	12.9GB	0.00GB	13GB	Full
<input checked="" type="checkbox"/> H:	232.9GB	57.42GB	175GB	Full
<input type="checkbox"/> I:	3.7GB	0.00GB	1GB	Full

1. On the Main screen, enter **Setup**  page.

2. On the **Setup** page, enter **Recording Schedule**.

3. **Hard Drive Selection:**

Select the **Hard Drive** you want to save for recording video/audio files.

CMS will display the **Estimated Total Hard Drive Storage** automatically.

4. **Setup Storage Space:** At least 1GB shall be reserved for REC.

5. **REC Speed Setting:** Recording speed: 1~30 fps for the cameras

6. **Full Speed Recording When Alarm**


Check on the box to enable Full speed recording (30fps) when alarm.

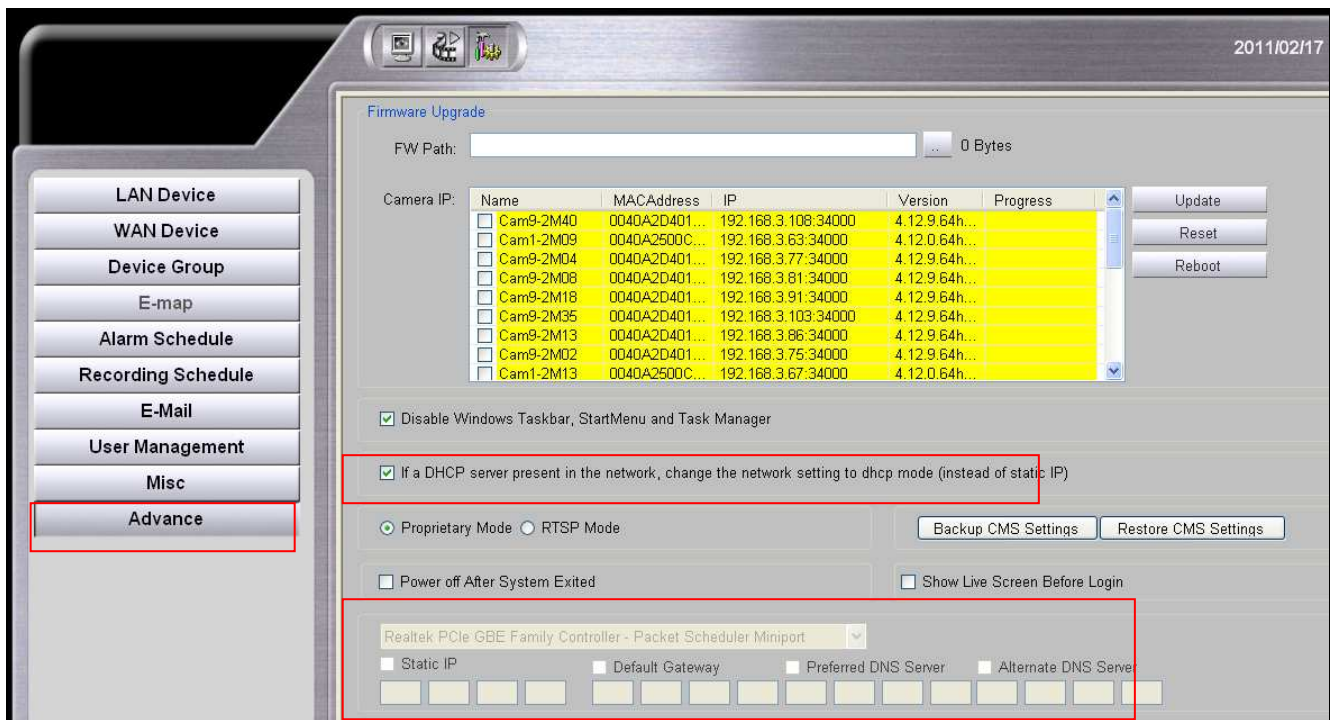
7. **REC Schedule Setting**

Draw time bar to schedule and enable video/audio REC for each camera.

5

● How to Set up Static IP

1. On the Main screen, enter **Setup**  page.
2. On the **Setup** page, enter **Advance**.
3. Uncheck ““If a DHCP server present in the network, change the network setting to dhcp mode (instead of static IP)””
4. Select Realtek Ethernet Card, and then insert information such as Static IP and Default Gateway.



5. Before returning to Live Mode, the system will ask if you want to save the changes. Click **Yes** to complete setup.

● When the Network Environment is managed by Router, how to Set up Port Forwarding

1. Please log in to your router
2. Enter the Virtual Server, set port "80" and "6741" for nCS.

For example, if the nCS's IP is 192.168.0.161, please set assign port "80" and "6741" for IP 192.168.0.161

產品頁: DIR-655 硬體版本: A3 韌體版本: 1.11EA

D-Link

DIR-655 // 設定 進階設定 工具 狀態 支援

虛擬伺服器

通訊埠轉送

應用程式

QOS ENGINE

網路過濾器

存取控制

網站過濾器

流入封包過濾器

防火牆設定

路由

進階無線網路

WISH

WI-FI 防護設定

進階網路

繁體中文

Internet

24-- 虛擬伺服器設定清單

名稱	埠	流量類型	排程
Remote CMS	6741	兩者	永遠
Remote VIA IE	80	兩者	永遠

幫助項目...

按下 **應用程式名稱** 下拉選單, 以列出預先定義的伺服器類型, 並選擇您所需的伺服器類型. 選擇後相關的設定欄位內容將自動被填上.

您可以在 "電腦名稱" 的下拉式 DHCP 用戶端清單裡選擇一台電腦, 或是手動輸入您要打開特定通訊埠的電腦 IP 位址.

選擇此規則何時該啓用的時間排程. 如果您在清單內沒有看到所需要的排程, 到 **工具** → **排程** 的畫面並建立新的時間排程.

選擇一筆過濾器來限制網際網路上的主機透過虛擬伺服器存取您信任的電腦. 若您在過濾器清單沒有看到所需的過濾器, 到 **進階功能** → **流入**

3. After finishing set up, please save and log out the router.